

AUGUST 2024

## IN THIS ISSUE

**B** A Word About  
Randolph Electric

**D** 86th Annual  
Meeting Recap

**F** Ask Your Energy  
Advisors

**H** Capital Credits  
Allocation

**H** Avoid Downed  
Power Lines

# Watts Working

## 86th Annual Meeting of the Membership



A newsletter for the member-owners of



Randolph Electric  
Membership Corporation

# A Word About Randolph Electric

From CEO Dennis Mabe

## **STORM-READY: Gearing Up for the 2024 Hurricane Season**



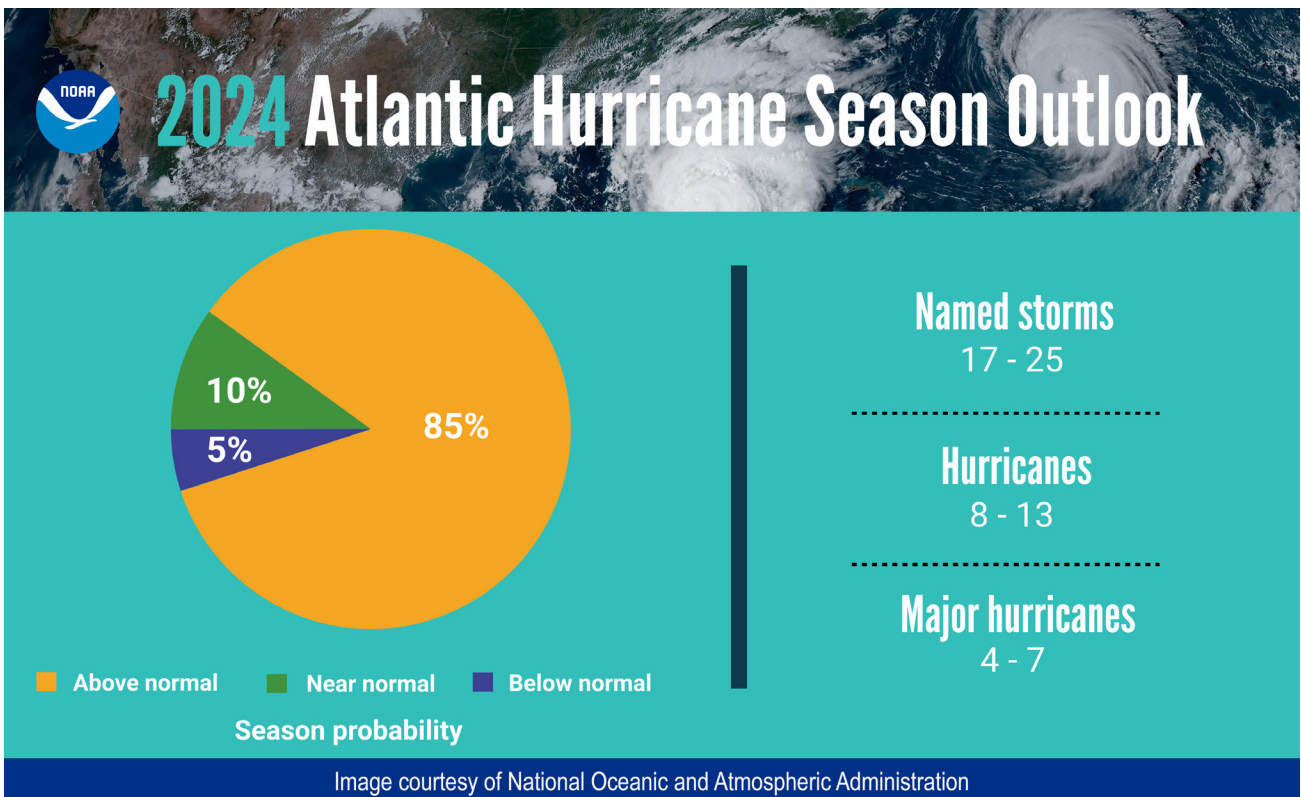
Dear Members,

As the 2024 Atlantic hurricane season begins, the National Oceanic and Atmospheric Administration (NOAA) released the annual hurricane outlook. This year's forecast predicts an 85% chance of an above-normal season, with an expected range of 17 to 25 named storms. Of these, 8 to 13 could become hurricanes, and 4 to 7 are projected to reach major hurricane status (Category 3 or higher).

These predictions are crucial for communities and industries across the Atlantic basin, particularly electric utilities, which must be prepared to face the devastating impacts of these powerful storms.

As we all know, a forecast is simply an output from a model that will give us a prediction or best guess of what may happen. I had a professor at N.C. State University tell me during a class that all models are wrong, but some are useful. It is with this understanding of usefulness of the forecast that your cooperative implements robust plans to minimize disruption of service delivery and ensure the rapid restoration of service if our system is impacted.

Hurricanes and tropical storms receive names from six lists established by the National Hurricane Center and maintained by the World Meteorological Organization. Each list includes 21 names arranged alphabetically, alternating





between male and female names.

As I write this article at the beginning of July, we are already at our second named storm and the first hurricane of the season, a category 4 named Beryl, tracking into the Caribbean. Beryl's projected path currently does not present a threat to Florida, but is a major threat to the Caribbean.

Even though the current path is not a threat to our system, our team will track the storm and any others that may form by the time you read this article and will make necessary preparations if any storm is projected to impact our service area.

Randolph EMC has a detailed storm response plan that we activate when a significant weather event threatens to impact our system. Our dedicated and experienced team works together to clear trees, repair lines, provide materials and supplies, coordinate crew locations, take calls and keep crews fed. Preparation is key to an effective and efficient storm response.

Major storms can result in power outages lasting several days. Don't wait for disaster to strike before acting. I urge you to plan now and prepare an emergency kit before a storm hits. You can follow the tips here and learn more on our website.

Randolph EMC is committed to being as prepared as possible in the event of a tropical storm this year. By following these recommendations, you can help ensure the safety of you and your loved ones during a storm.

Cooperatively yours,



Dennis Mabe,  
Chief Executive Officer



**Storm Preparedness  
Emergency Kit**

- ✓ WATER AND FOOD
- ✓ BATTERIES
- ✓ BLANKETS
- ✓ PHONE
- ✓ CLOTHING
- ✓ CAMERA
- ✓ PRESCRIPTIONS
- ✓ MONEY
- ✓ TOILETRIES
- ✓ IMPORTANT DOCUMENTS
- ✓ FLASHLIGHTS
- ✓ BOOKS AND GAMES
- ✓ RADIO AND CLOCK
- ✓ PET SUPPLIES

 **Randolph Electric**  
Membership Corporation  
Your Touchstone Energy Cooperative

## Remember the “3 Bs.”

### BASICS

Make sure you have enough bottled water to last up to three days in case you experience an outage. Stock your car and house with weather appropriate gear, clothes and blankets. Store food that your family can consume in case you do not have the ability to cook. Make accommodations for pets and livestock.

### BATTERIES

Keep your phones charged and make sure your flashlights have fresh batteries. Place batteries in an accessible location that is easy to find in the dark, should you lose power.

### BACK-UP PLAN

Communicate with loved ones and those with vulnerable health now. Tell them what time to expect you to check in on them in-person or on the phone during the storm. Make plans now about how and where this loved one will go in case he or she loses power.

# Successful 86th Annual Meeting

The theme of the meeting was "Powering the Journey Ahead."

Randolph Electric Membership Corporation celebrated its 86th annual meeting of the membership Friday, June 21, at Southwestern Randolph High School in Asheboro.

Randolph Electric recorded 339 registered members who attended the in-person business meeting and 581 who registered online. An estimated crowd of 550 people attended the event. During the business meeting, the membership elected three directors: Delbert Cranford to represent District 5, Steve Harris in District 8, and Billy Maness in District 9.

REMC Board of Directors President Tammie Phillips presented a report on events and investments over the past year. Secretary-Treasurer Lee Isley presented a 2023 financial report with over \$72 million in revenue and \$68 million in expenses.



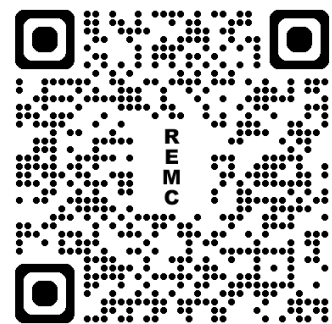
**"Since 1938, Randolph Electric has kept our member-owners as our top priority. We appreciate the vital role they play in the life of the cooperative," said retiring CEO Dale Lambert.**

"As we celebrate our 86th anniversary, we are proud

that our member-owners have ranked REMC among the highest in the nation for member satisfaction among electric cooperatives," said Lambert.

## Miss the meeting?

You can watch the video by scanning this QR code below on your smart device.



Left: Attorney Aaron Christensen administers the oath of office to Directors Cranford, Harris and Maness.

At top: The Birthday Party Rock Star made animal balloons and entertained children during the meeting.





Each year, the Annual Meeting provides the opportunity for the membership to participate in the life of the cooperative. This year, REMC honored the almost 40-year career of Dale Lambert, retiring Chief Executive Officer.

Right: Many members won door prizes drawings including cash and bill credits, gift cards, bicycles of all sizes, small appliances and local pottery.

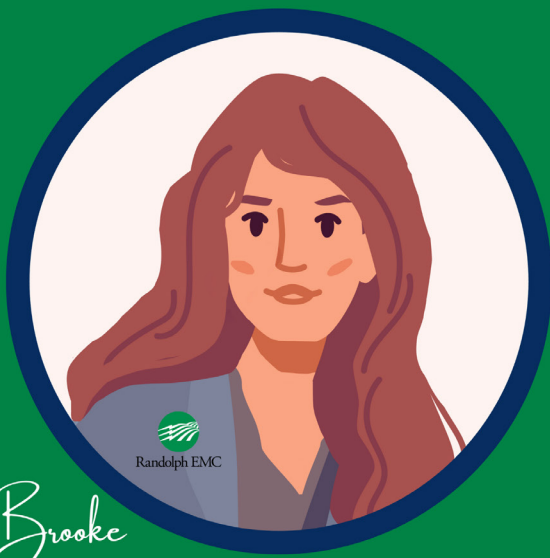


This year, members enjoyed an outstanding live performance by the gospel band Endless Highway. They also heard presentations from elected officials such as N.C. House Representatives Dennis Riddell, Brian Biggs, Neal Jackson and N.C. Senator Dave Craven.

Left: Members enjoy the homemade peach flavor of Gilbert's Old-Fashioned Ice Cream prior to the start of the meeting.







Brooke



Doug

# Ask Your Energy Advisors

*The best advice from REMC's amazing duo!*

In this write-in advice column, Energy Services Manager Brooke McNeill and Energy Efficiency Specialist Doug Loflin answer your questions about the topics on your mind.

This cost-conscious edition of **Ask Your Energy Advisors** provides tips to incorporate into your daily routine. These steps can help you reduce your energy consumption, save money on your bill and contribute to a more sustainable environment.

## Staying out of Hot Water

**Dear Brooke and Doug,**

I don't believe it can get any hotter outside, so a cold shower is a wonderful way for me to cool off. I've encouraged my family to do the same, but they will not. Meanwhile, my utility bills are higher than ever. Is there any way to convince them that a cool shower is refreshing for the body and the pocketbook?

Sincerely,

*Feeling the Heat in High Falls*

**Dear Feeling,**

There is a sneaky way to get your family to take cooler showers and see at least some savings on your power bill. It all starts with focusing on your water heater.

If you set your water heater to 120°F (49°C), you should see some savings. The default setting is usually 140°F. However, we see many families with small children who reset to 120°F to prevent the possibility of scalding. This safety measure also results in energy savings.

The only reason not to lower the temperature is if you have an immuno-compromised person in your household.

Also, if your water heater is not insulated, you may be paying more for energy. Many newer models are better insulated and more energy efficient than ever. You can check to see if your water heater is doing its job and saving you money.

Look at the product sticker on the tank or find the manual associated with your heater. If the R-value is under 24, then your heater needs insulation. You can purchase a blanket kit at a local hardware store or by calling an experienced professional technician.

We hope that these tips help your family stay calm, cool and collected!

# Betting on Dirty Laundry

## Dear Brooke and Doug,

Can you settle a bet? My sister says it's best to let your dirty laundry build up over time and run big loads in the washing machine. I say it's better to wash a load a day, no matter if it's a big load or a small load. Which is the better choice? (My sister and I are very competitive, and there is a steak dinner riding on this.)

*Suspicious Sister in Seagrove*

## Dear Suspicious,

We hate to break it to you, but your sister is correct on this one, at least from an energy efficiency standpoint!

While it may keep you much more on track to wash a load of laundry every day, it is actually more efficient to wait until you have a full load of dirty clothes. Running a full machine takes

as much energy as running a partially full machine.

We know you didn't ask about the dishwasher, but the same principle is true there, also. It's best to accumulate a lot of dirty dishes, and then run the automatic dishwasher. Turning off the dry cycle and allowing the dishes to drip dry also helps save money on your power bill.

We're sorry about the dinner, but a good steak can go a long way in building a strong relationship with your loved one. Please let us know if we can settle any more sisterly debates in the future.

Sincerely,

**Brooke McNeill,**  
Energy Services Manager

**Doug Loflin,**  
Energy Efficiency Specialist



Have a question for Brooke and Doug? Send a letter to Ask Your Energy Advisors, PO Box 40, Asheboro, NC 27407, or email your question to Brooke and Doug at [EnergyAdvisor@randolphemc.com](mailto:EnergyAdvisor@randolphemc.com). You may see your question in a future column!



Randolph Electric Membership Corporation provides safe and reliable power with exceptional value to more than 33,000 member accounts in Randolph, Moore, Montgomery, Chatham and Alamance counties.

This institution is an equal opportunity provider and employer.

### Electric Service

- Asheboro ..... (336) 625-5177  
(800) 672-8212
- Robbins ..... (910) 948-3401  
(800) 868-7014
- Report Outage ..... (877) REMC-OFF  
(877) 736-2633

- Account Info  
& Bill Payments: ..... (877) 534-2319
- Business Hours: ..... 8 am – 5 pm, M-F

### Board of Directors

- Tammie Phillips.....President
- Billy Maness..... Vice President
- Lee Isley .....Secretary-Treasurer
- Scott Cole..... Assistant  
Secretary-Treasurer

- Jerry Bowman                      Larry Routh
- Delbert Cranford                 Jeff Sugg
- Steve Harris

### Senior Staff

- Dennis Mabe .....Chief Executive Officer
- Jay Albright ..... District Vice President
- Fred Smith..... Vice President of  
Economic Development & Compliance
- Michael Trent ..... Vice President of  
Member Services & Public Relations
- Jacob Barlow ..... Vice President of  
Engineering & Operations
- Nicole Arnold ..... Editor

Visit Randolph EMC Online  
[RandolphEMC.com](http://RandolphEMC.com)





# Capital Credits Allocation for 2023

Capital credits are one of the core differences between co-ops and investor-owned utilities. Because members enjoy ownership of the company, they receive a share of the co-op's net margins—the amount of money that is left over after paying all expenses for the year. The cooperative refers to these shares as capital credits.

Randolph EMC's net margins totaled \$3,767,803 at the close of 2023. This amount has been allocated among the capital credit accounts of members who had an active electric account during 2023. Each member's share is based on a percentage of \$3,767,803, determined by the total amount of energy purchased for the year.

## How to Calculate the Allocation

- 1** Add together all the energy-related charges from each monthly electric bill received in 2023.
- 2** Add together the totals from each month's bill (from Step 1) to find the total for the year.
- 3** Multiply this total by 0.056026. This gives you the capital credits amount allocated to the account for 2023.

---

## Help Us Find Former Members

You can help us find former members who may have an outstanding capital credits check by visiting [RandolphEMC.com/unclaimed-capital-credits](https://RandolphEMC.com/unclaimed-capital-credits)

---



# Avoid Downed Power Lines

**CONSIDER** all power lines energized and deadly.  
**STAY** at least 50 feet away from the scene.  
**CALL 9-1-1** to report the downed line.  
**WARN** others to stay away.

**THINK BEFORE YOU ACT**, if you see a downed power line.