

Watts Working

Building a Brighter Energy Future

This year marks the 50th anniversary of Earth Day, which was first celebrated on April 22, 1970, and serves as an annual recognition of the importance of protecting our planet and its resources.

At Randolph EMC, we are committed to delivering power that is affordable, reliable and low carbon. More than half our power comes from emissions-free nuclear, and we are increasingly incorporating renewable energy sources and grid-optimizing technologies to take this commitment even further.

As a co-op member, you can help amplify the benefits of electricity by using it as a cleaner, cheaper and smarter alternative to fossil fuels.

Appliances, equipment, agricultural and industrial



processes, and even your car, can now be powered by electricity, resulting in cost savings, lower emissions and increased productivity and efficiency.

Electric cooperatives are building a statewide electric vehicle charging network and implementing other innovative initiatives that support increased commerce, tourism and economic development in the communities we serve. And we offer incentives

like special rates, EV charger rebates and access to low-interest loans to make it easier for co-op members like you to enjoy the savings and efficiency that electricity has to offer.

On Earth Day and every day, we are building a brighter energy future for our members and the communities we serve. Visit RandolphEMC.com to find out more about our programs and services, or call your local office.



B NC Co-ops
Vote

C Bright Ideas
Grants for
Teachers

D Dale Lambert's
AWARE Column

G Directorate
Districts

H Bylaws



CO-OPS VOTE

WWW.VOTE.COOP

NC Co-ops Vote:

Make Your Voice Heard!

This year, North Carolina voters will have the opportunity to vote for president, governor, members of Congress and state legislators. North Carolina's electric cooperatives have launched NC Co-ops Vote, a non-partisan effort to educate co-op members and encourage them to vote.

North Carolina's Co-ops Vote effort also encourages electric cooperative employees and members to attend campaign events for national and statewide

elections in their area. They will be provided yellow shirts with the Co-ops Vote logo to provide unity and emphasize the co-op presence. NC Co-ops Vote does not endorse any candidates for election.

North Carolina's primary election was held on March 3 and the general election will be November 3. Like NC Co-ops Vote on Facebook and follow us on Twitter using [@NCCoopsVote](https://twitter.com/NCCoopsVote) to learn more about how you can get involved.

Help Us Thank a Lineworker on April 13

On Monday, April 13, Randolph EMC will join other electric cooperatives across our state and nation to celebrate Lineworker Appreciation Day, an annual tribute to the outstanding contributions of our lineworkers.

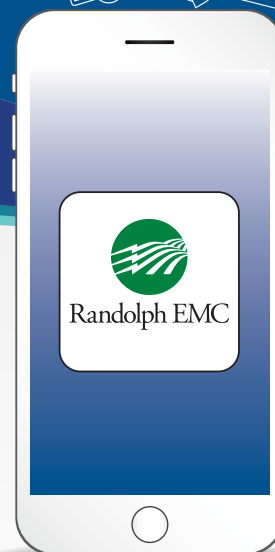
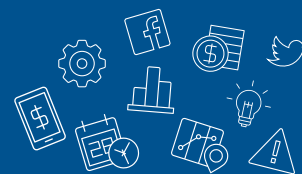
"North Carolina has been hit hard by hurricanes and storms in recent years, and our lineworkers have gone above and beyond to serve our members," CEO Dale Lambert said. "They work in extremely challenging conditions to provide the power we all depend on, and we're proud to honor their skill, dedication and expertise."

In addition to serving their own communities, lineworkers are also called on to aid others in times of great need. This commitment to "cooperation among cooperatives" is one of the principles that sets electric cooperatives apart and demonstrates the true strength of our national cooperative network.

While Randolph EMC appreciates the work of our lineworkers every day, the second Monday in April is set aside each year to thank them and give them much-deserved recognition. Follow Randolph EMC on social media and share your thanks for their service, too!



Join thousands of other members in using the **Randolph EMC Mobile App** for fast, easy, secure access to your account anytime.



Convenience

- › Pay your bill or check your usage anytime
- › View the outage map
- › Contact your local office



Choice

- › Choose the payment method that works best for you
- › Schedule payments anytime before your due date
- › View usage information as kilowatt-hours or dollar amounts



Control

- › Set or change usage alerts or billing notifications
- › Download historical usage & billing data
- › Select notification methods



survey

This spring, REMC will partner with TSE Services to conduct member satisfaction surveys.

The feedback gathered in these surveys helps REMC gauge its performance and improve products and services for you in the future.

You may receive a survey call or a link to a survey via email to provide your input.

We encourage you to share your email address with us to be sure you're eligible to receive a survey.

We appreciate your time and thank you for sharing your thoughts!

APPLY
NOW

Grants Available for Teachers & Nonprofits

Apply Now for a Chance to Receive Up to \$2,000 per Project!



K-12 educators are eligible to apply for grants up to \$2,000 for creative, innovative projects!

Applications will be accepted April 1 – September 15, 2020.

PHP Sharing Success Community Grants

Nonprofits with programs that benefit REMC members in the areas of health & wellbeing, financial stability & education advancement are encouraged to apply for funding up to \$2,000. Applications are due May 31, 2020.

Learn More at RandolphEMC.com!

A Word About Randolph Electric

From CEO Dale Lambert

Your safety is important to us

Dear Members,

We're family, right? At least I think of our members as an extension of my family in so many ways.

We have been through a lot together in the last 35 years. I have been blessed to have met so many dedicated members who are willing to provide leadership for the co-op and stepped up to help when we needed it. This is especially true during major storm events.

Members have volunteered their tractors to pull equipment into hard to reach places, provided boats to pull wire over water and given rides on ATV's to haul tools and line personnel into remote places. This list could go on and on.

Probably the most memorable experiences for our team are the numerous times hot biscuits and coffee were brought to crews working long hours in snow and ice on a cold winter night. Or dropping off sandwiches, sweets and bottles of cold water to the crews on a hot summer evening after a line of strong thunderstorms moved across the system.

The bottom line is, many of you are very willing and eager to

assist us in any way possible. We are very grateful for all you do. You are not taken for granted.

But in a few recent cases, this eagerness to help has gone too far. When families have a serious issue to talk about, everyone



understands the importance of being honest, genuine and thoughtful during the discussion for the betterment of the entire family. This month, I have an extremely important and serious issue to talk to you about as a co-op family member—your safety.

Storms cause trees to fall onto power lines. Trees are, by far, the number one reason your power goes out during a storm. That's the reason we have an aggressive right-of-way program to keep the trees trimmed on a specific time cycle.

Over the last few months, there have been several instances when trees have fallen onto power lines and members used their chain saws to cut the trees off. This is an extremely serious and life-threatening safety issue.

Through the years, I have personally witnessed power lines that—in the right conditions—had trees on them or were on the ground and remained energized. Poles have been broken from trees or car accidents, and the lines have remained energized until we could arrive and turn the power off.

A line is not dead until it is grounded by our line personnel. Any member that finds a power line down should assume it is energized and should not go near the line or any object that may be touching it. If you do, you are risking your life and health.

Here are some additional safety measures to keep in mind:

If moving or handling a tall object, keep plenty of distance between the object and the overhead power line. If an object gets too close to an overhead line, the electricity



can arc to the object and it can become energized causing serious injury and possibly death.

If excavating in the vicinity of an underground power line, have the line located prior to performing the work by dialing 811. Contact with an underground power line can be just as deadly as contact with an overhead line.

Another concern for line personnel during outage restoration efforts is generators. When connected and properly operated, a generator can help bring comfort and relief during adverse weather conditions while power restoration efforts are underway.

But if a generator is not installed or connected properly, it can damage appliances, cause injuries and even death to you or to our crews working to restore power. When a generator is connected to your home wiring system improperly, the energy it generates can flow back through

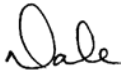
the transformer and onto the lines at a very high voltage.

We have devices that you can purchase that are placed into your meter base for connecting a generator that eliminates having to completely rewire your electrical entrance. Please contact one of our offices if you have additional questions or need assistance.

I would really appreciate your help to get the word out on this very important issue. Please share this safety message with the rest of your family members and neighbors.

Safety for our employees and safety for you and your family is our number one priority. Please take the proper precautions and never go near a downed power line or objects near a line. Too much is at stake to do otherwise.

Cooperatively Yours in Safety,



Dale F. Lambert
Chief Executive Officer

Never attempt to help crews by cutting a tree off of a power line or out of the road. Doing so could be deadly! Lines can still be energized even when they're on the ground and it's not safe to go near them until our crews have properly grounded the line. Report the downed lines and keep yourself and others away until help arrives.



Randolph Electric Membership Corporation provides safe and reliable power with exceptional value to more than 32,000 member accounts in Randolph, Moore, Montgomery, Chatham and Alamance counties.

This institution is an equal opportunity provider and employer.

Electric Service

Asheboro (336) 625-5177
..... (800) 672-8212

Robbins: (910) 948-3401
..... (800) 868-7014

Report Outage (877) REMC-OFF
..... (877) 736-2633

Account Info
& Bill Payments: (877) 534-2319

Business Hours: 8 am – 5 pm, M-F

Board of Directors

Jerry Bowman President

Tammie Phillips Vice President

Billy Maness Secretary-Treasurer

Lee Isley Assistant
Secretary-Treasurer

Scott Cole Larry Routh
Delbert Cranford Sue Spencer
Steve Harris

Senior Staff

Dale F. Lambert Chief Executive Officer

Jay Albright District Vice President

Adam Hargett Vice President of Finance

Dennis Mabe Vice President of
Engineering & Operations

Fred Smith Vice President of
Economic Development & Compliance

Jill Vanness Editor

Visit Randolph EMC Online

RandolphEMC.com



District Nominating, Credentials & Election Committees Appointed

Pursuant to Section 3.03. of the Bylaws of the Cooperative, the Nominating Committees for Districts 2, 4 and 7, from which Directors will be elected at the Annual Meeting, have been appointed. The members that have been appointed to serve on those respective Nominating Committees will meet at the Asheboro headquarters office of Randolph EMC, located in Asheboro, N.C., at 6:00 p.m. on Monday, May 4, 2020, to nominate a candidate who will run for the Board of Directors from each district. All three District Nominating Committee meetings will be held on the same evening.

The Credentials and Election Committee, pursuant to Section 2.08 of the Bylaws of the Cooperative, will also meet on Monday, May 4, 2020, at 6:30 p.m. at the office of Randolph EMC in Asheboro, N.C. It is the duty of the Credentials and Election Committee to establish and approve the manner of conducting member registration and voting, to pass upon all questions that may arise with respect to the registration of members, count all ballots cast in any election, rule on the validity of any ballots cast, and to rule upon any other questions, protests or objections affecting the results of the election. The members listed below make up the 2020 committees.

2020 Nominating Committee Members

District 2: Cole	District 4: Bowman	District 7: Phillips
James F. Gann	Jeff L. Brantley	Sue S. Copelan
Stephanie Langley	David J. Grantham	Bernard Purvis
William Patrick Owens	Ruby Lucas Hunter	Mark Reynolds Purvis
William S. Parks Jr.	Tommy Johnson	Vergil L. Shamberger
Dr. Amy Williams	Walker B. Moffitt	Tommy M. Upchurch

2020 Credentials & Election Committee

E. Bernard Beck	Yates M. Hussey	Richard D. Seawell
Craig Bray	Charles L. Kemp	Jeffrey Clay Sugg
Philip R. Brown	Wayne D. Lahmeyer	Quinton G. Thompson
Mary Priscilla Clay	Bradley Lanier	Jeff Webb
Sam L. Coble	Eric Lee McInnis	Barry Millard Wright
Lu-Ann Deaton	Beatrice C. Morehead	

Randolph EMC Board of Directors



Lee Isley
District 1
Assistant Secretary-Treasurer



Larry Routh
District 3



Delbert Cranford
District 5



Sue Spencer
District 6



Steve Harris
District 8



Billy Maness
District 9
Secretary-Treasurer

Randolph EMC Directorate Districts

The election for Directorate Districts 2, 4 & 7 will be held at the Annual Meeting on June 19, 2020.



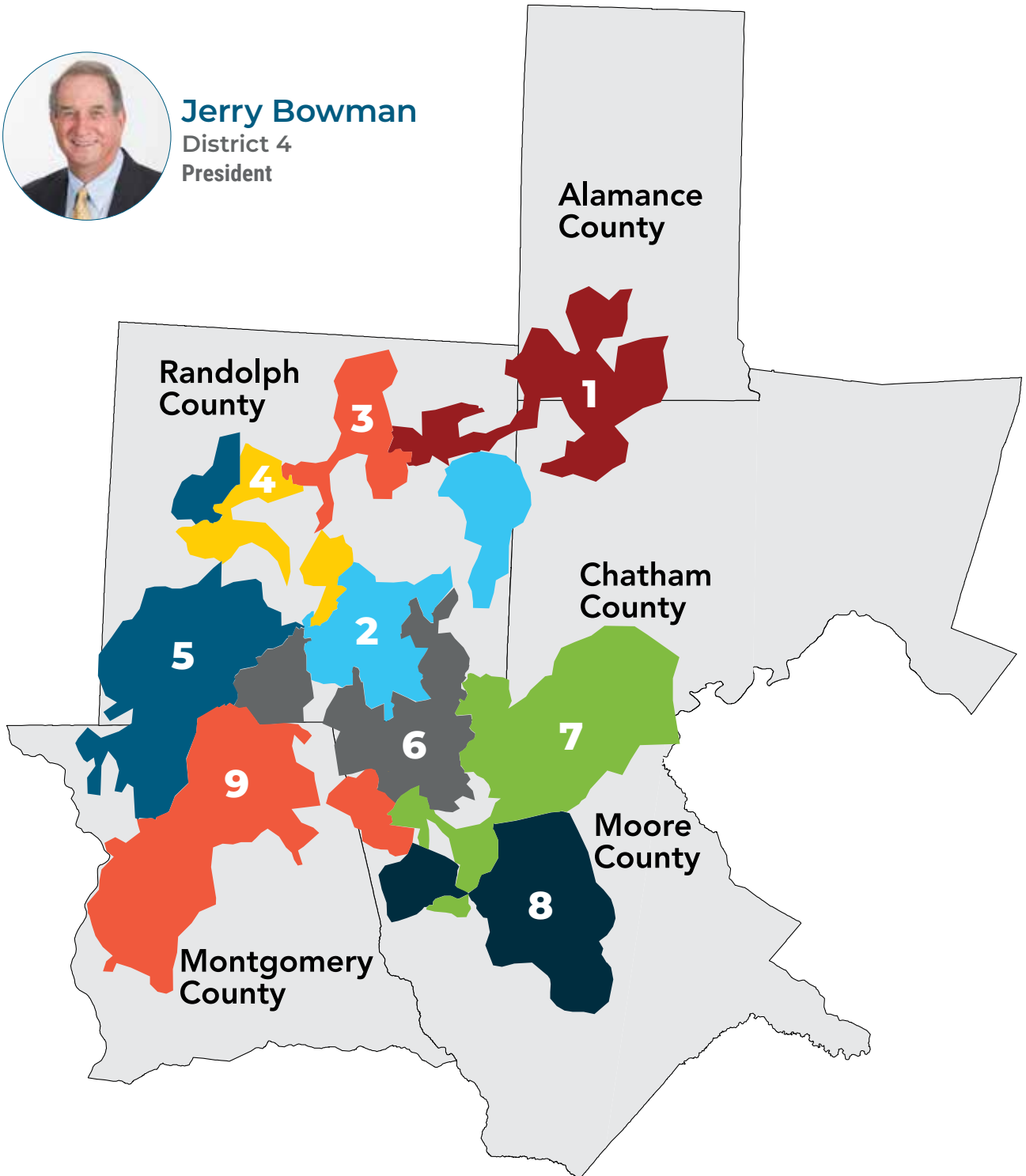
Scott Cole
District 2



Tammie Phillips
District 7
Vice President



Jerry Bowman
District 4
President



BYLAWS Relevant to the Qualifications, Nominations and Elections of Members to the Board of Directors

SECTION 3.02. QUALIFICATIONS.

The persons named as directors in the Articles of Incorporation of the Cooperative shall compose the board of Directors until the first Annual Meeting or until their successors shall have been elected and shall have qualified. No person shall be eligible to become or remain a director of, or to hold any position of trust, in the Cooperative, who:

(a) does not have the legal capacity to enter into a binding contract under the laws of the State of North Carolina; or (b) does not have the mental and physical capacity to exercise the corporate standard for business judgment in discharging his/her duties in a manner to be in the best interests of the Cooperative under the laws of the State of North Carolina; or (c) has not been a member of the Cooperative in the Directorate District for which such person seeks election and has received electric service there as his/her primary residential abode in such person's own name for at least one hundred eighty (180) consecutive days next preceding the date of the election; or (d) has, during the ten (10) years preceding the date of nomination, been a regular employee of the Cooperative or of a competing enterprise; or (e) is in any way employed by or financially interested in a competing enterprise; or (f) is engaged in the business of selling electric energy.

A director or director's company may be allowed to sell materials, supplies, equipment, or vehicles to the Cooperative only if at least three bids are submitted to the Cooperative for any such sale, and only if the director or his/her business has submitted the lowest bid. Upon establishment of the fact that a nominee for director lacks eligibility under this Section or as may be provided elsewhere in these bylaws, it shall be the duty of the chairman presiding at the meeting at which such nominee would otherwise be voted upon to disqualify such nominee. Upon the establishment of the fact that any person being considered for, or already holding a directorship or other position of trust in the Cooperative, lacks eligibility under this Section, it shall be the duty of the Board of Directors to withhold such position from such person, or to cause such person to be removed therefrom, as the case may be.

Nothing contained in this Section shall, or shall be construed to, affect in any manner whatsoever the validity of any action taken at any meeting of the Board of Directors, unless such action is taken with respect to a matter which is affected by the provisions of this Section and in which one or more of the directors have an interest adverse to that of the Cooperative.

When a membership is held jointly by a husband and wife, either one, but not both may be elected a director; provided, however, that neither one shall be eligible to become or remain a director or to hold a position of

trust in the Cooperative unless both shall meet the qualifications hereinabove set forth.

SECTION 3.03. NOMINATIONS.

It shall be the duty of the Board of Directors to appoint, not less than sixty (60) days nor more than ninety (90) days before the date of the meeting of the members at which directors are to be elected, a District Nominating Committee for each Directorate District in which directors are to be elected. Such District Nominating Committees shall consist of not less than three (3) nor more than five (5) members who shall be selected from the Directorate District from which a director is to be nominated. No officer or member of the Board of Directors or close relative thereof shall be appointed a member of such Committee/Committees. The Committees shall prepare and post at the principal office of the Cooperative at least twenty (20) days before the meeting a list of nominations for directors, but any fifteen (15) or more members may make other nominations in writing over their signatures not less than fifteen (15) days prior to the meeting and the Secretary shall post the same at the same place where the list of nominations made by the Committees is posted. The Secretary shall mail with the Notice of the Meeting a statement of the number of directors to be elected and showing separately the nominations made by the District Nominating Committees and the nominations made by petition if any. The members may at any meeting at which a director or directors shall be removed, as hereinbefore provided, elect a successor or successors thereto without compliance with the foregoing provisions with respect to nominations. Notwithstanding anything in this section contained, failure to comply with any of the provisions of this section shall not affect in any manner whatsoever the validity of any election of directors.

SECTION 3.04. ELECTION & TENURE.

At each annual meeting of the members, directors shall be elected by secret written ballot by the members and, from among those members who are natural persons; PROVIDED that, when the number of nominees does not exceed the number of directors to be elected and if there is no objection, secret written balloting may be dispensed with in respect of that particular election and voting may be conducted in any other proper manner. Directors shall, unless the members determine otherwise in advance of the initial balloting, be elected by a plurality vote of the members. Drawing by a lot shall resolve, where necessary, any tie votes.

Directors shall be so nominated and elected that, beginning with the Annual Meeting of the members of 1996, directors from Directorate Districts 2, 4, and 7 shall be elected for three (3) year terms; at the Annual meeting of the members of 1997, directors from Directorate Districts 5, 8, and 9 shall be elected for three (3)

year terms; and at the Annual Meeting of the members of 1998, directors from Directorate Districts 1, 3, and 6 shall be elected for three (3) year terms. Beginning with the next succeeding Annual Meeting of the members, and at each such meeting thereafter, the same number of directors that corresponds to the number whose terms are expiring shall be elected to serve a term of three (3) consecutive years; PROVIDED, that a year as used in this section shall mean the period beginning with one Annual Meeting of the members and ending at the next; and PROVIDED FURTHER, that, notwithstanding the terms for which they are elected, directors shall serve until their successors shall have been elected and qualified.

SECTION 3.05. DIRECTORATE DISTRICTS.

Directors shall be so nominated and elected that the Board shall be comprised of nine (9) Directorate Districts. A director of a Directorate District must be a resident of, and make his/her primary residential abode, on a premises served by an electrical circuit provided by the Cooperative. All of the Cooperative's electrical circuits, as identified by circuit numbers on the Cooperative's maps and records, shall be divided into nine (9) Directorate Districts. For the purpose of assuring equitable representation, additional circuit numbers may be added to or deleted from a Directorate District. It shall be the duty of the board of Directors to make such additions to, and deletions from, the various Directorate Districts no later than April 1st of each year. Such additions and deletions, along with the existing Directorate District circuit numbers, will be provided to the members. Each of the nine (9) Directorate Districts is:

District Number	Circuit Numbers
1	1, 2, 3, 4, 5, 8, 68
2	6, 7, 24, 25, 27, 30, 71, 73
3	9, 13, 14, 16, 67, 69, 70
4	10, 11, 15, 26, 75, 76, 77
5	18, 19, 20, 21, 23, 78
6	28, 55, 72, 87, 88
7	33, 34, 36, 37, 38, 46, 47, 48, 49, 80, 81, 83, 84
8	39, 40, 50, 51, 52, 53, 82, 85, 86
9	42, 43, 44, 61, 62, 63, 64, 89, 90

(Electrical circuits may be added or deleted on April 1st of each year for the purpose of ensuring equitable representation.)