

watts working

The Monthly Newsletter for Members of Randolph Electric Membership Corporation

Include Home Energy Savings & Safety in Your Vacation Plans

Summer vacations are hard to pull off these days, so it's important that trip-takers have peace of mind while away. Electrical safety can be an issue because fires can start when lightning storms strike electronics or small appliances. Likewise, these appliances don't stop working just because you're not there. Make sure your home is in safety and savings mode while you're away with these tips.

SAVINGS

- Set the thermostat to 85 degrees. If it's a programmable thermostat, use the "hold" or "vacation" setting to keep it at that temperature.
- Unplug computers, CD/DVD players, TVs, and gaming systems before leaving.
- Use timers to operate lights each night.
- Turn your water heater down to the lowest setting. Leave a reminder to turn it back up upon returning home.

SAFETY

- Turn off all electrical appliances, including toaster ovens, stoves, and hair styling irons.
- Unplug any appliances that you can, especially those most susceptible to lightning or power surges.
- Install motion-detecting lights outdoors.
- Give your house key to a neighbor and make sure he or she has a phone number where you can be reached.

**See Our Special Electrical Safety Month Section on Pages F & G!*



in this issue

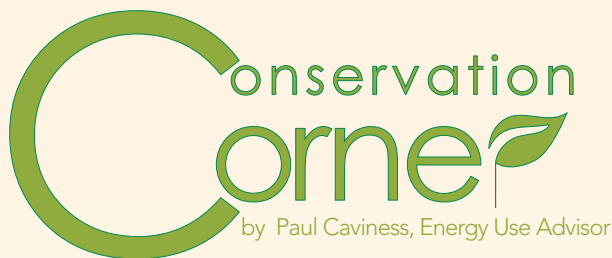
How To Estimate Appliance Energy Use	C
Electrical Safety	F
Dale Lambert's AWARE Column	H



Veterans who wish to apply for a chance to fly on the Triad Flight of Honor must return their completed applications to Randolph EMC by May 20, 2011. For more info, visit our Web site or call 1.800.672.8212

Randolph EMC offices will be closed Monday, **May 30**, for Memorial Day.





Keeping Cool:

Tips for Beating the Summer Heat & High Monthly Bills

Don't let the warmer weather turn into "summertime blues" when the monthly electric bill arrives. Here are some tips on keeping your electric bill in check.

Adjust the Thermostat. Set the temperature between 78°F - 80°F, and you could save up to 8 percent on monthly cooling bills.

Programmable thermostats make it easy to save by offering four pre-programmed settings to regulate a home's temperature throughout the year.

Be a "fan-atic". While they don't replace an air conditioner or a heat pump, fans move the air so everyone feels more comfortable. On milder days, fans can save as much as 60 percent in electric bills. Fans cool people, not rooms, so turn them off when you leave.

Regular maintenance is essential. Randolph EMC recommends that members have their HVAC systems serviced annually by a NATE (North American Technician Excellence)-certified technician. This HVAC professional will check the entire system to make sure it is running efficiently, which will help to extend the life of the system and save money.

Be sure your cooling equipment is sized properly to avoid higher electric bills. A unit that is too large for your home will not cool evenly and might produce higher humidity indoors.

Instead of getting burned this summer with high energy bills, check out ***TogetherWeSave.com***, for more money-saving ideas!

Make Plans Now to Attend Next Month's Annual Meeting!

Randolph EMC's Annual Meeting will be held at Southwestern Randolph High School on Friday, June 17 at 5:30 p.m.

The Annual Meeting is the place for you to visit with other members and Co-op directors and employees while enjoying free homemade ice cream and live entertainment. You'll also learn more about what's going on in the electric utility industry and what the future holds for Randolph EMC. Best of all, each registered member will have the chance to win one of many great door prizes!

Make plans now to attend this year's Annual Meeting and don't miss your registration card in next month's issue of *Carolina Country*.

We look forward to seeing you there!

CONTACT US

Electric Service:

Asheboro(336) 625-5177

.....(800) 672-8212

Robbins Area:(910) 948-3401

.....(800) 868-7014

Power Failures:(877) REMC-OFF

.....(1-877-736-2633)

Bill Payments:(877) 534-2319

Office Hours:

8:00 am – 5:00 pm | Monday–Friday

Board of Directors:

Steve HarrisPresident

Bob WrightVice President

Larry RouthSec.-Treasurer

Jerry BowmanAssist. Sec.-Treasurer

James Andrews, Delbert Cranford, Paul Hurley,

Tammie Phillips, Sue Spencer

Senior Staff:

Dale F. LambertChief Executive Officer

Jay Albright District Vice President

Ron Gunnell Vice President of Engineering

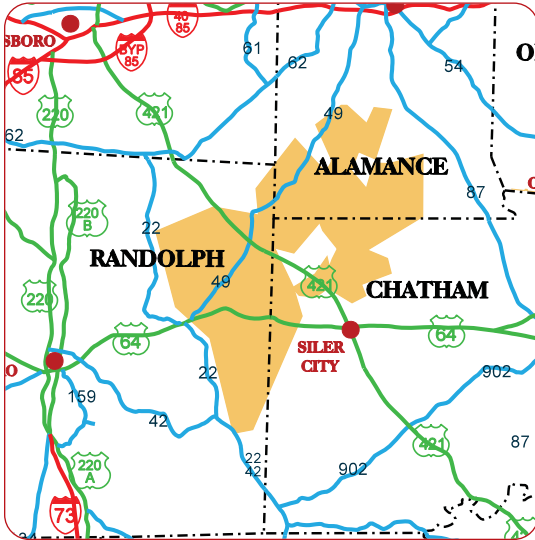
Jimmy LanierVice President of Operations

Bob Phillips ... Sr. Vice President & Chief Operating Officer

An Equal Opportunity Employer | M/F/V/H

Jill Vanness Public Relations Coordinator, Editor

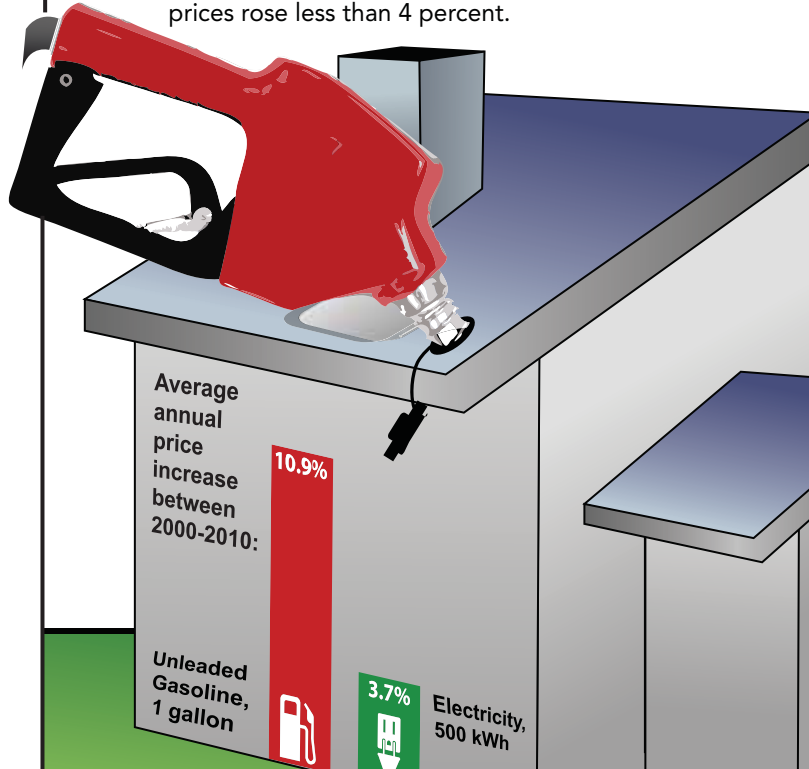
MAY & JUNE SMART METER INSTALLATIONS



Randolph EMC crews will be installing smart meters in the highlighted areas of Alamance, Chatham, and Randolph counties during May and June.

Filling Up on VALUE

Electricity continues to be a bargain, especially when compared to other consumer goods. Imagine if your electric bill fluctuated as much as prices at the pump. On average, over the past decade, gas prices have risen almost 11 percent annually, while electricity prices rose less than 4 percent.



Source: U.S. Bureau of Labor Statistics; Mainstream Graphics

Estimating Appliance Energy Use

Q I'm trying to decide whether to invest in a water heater that uses heat pump technology. How can I estimate an appliance's energy consumption?

A You can usually find the wattage of most appliances stamped on the bottom or back of the appliance, or on its nameplate. The wattage listed is the maximum power drawn by the appliance. Since many appliances have a range of settings, the actual amount of power consumed depends on the setting used at any one time.

Use this formula to estimate an appliance's energy use:

$$\begin{aligned} & \text{Wattage} \\ & \times \text{Hours used} \\ & \times \text{Frequency used per year} \\ & \div 1000 \\ & = \text{Kilowatt-hour (kWh) consumption per year} \end{aligned}$$

Then, calculate the annual cost to run the appliance:

$$\begin{aligned} & \text{kWh per year} \\ & \times \text{Rate per kWh consumed (10.6¢ for REMC)} \\ & = \text{Cost to run appliance per year} \end{aligned}$$

The following calculation shows the difference in the annual cost for operating a 3,800-Watt standard water heater versus a more efficient 2,000-Watt heat pump water heater for about 100 hours per month:

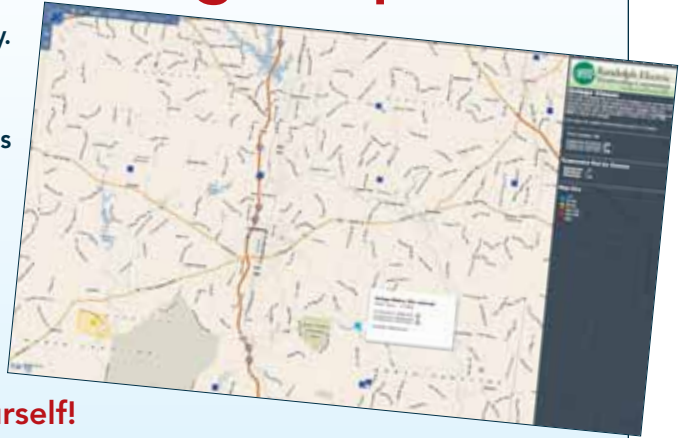
3,800 Watts	2,000 Watts
× 100 hours per month	× 100 hours per month
× 12 months per year	× 12 months per year
÷ 1,000	÷ 1,000
= 4,560 kWh/year	= 2,400 kWh/year
4,560 kWh	2,400 kWh
× \$0.106	× \$0.106
= \$483.36 per year	= \$254.40 per year

To learn more about Heat Pump Water Heaters, visit www.RandolphEMC.com/HPWH.html

Log on to REMC's Online Outage Map

Providing reliable power is Randolph EMC's top priority. However, sometimes circumstances beyond our control cause you to lose power. The cooperative provides the online outage map as a way to improve communications with members and to help you monitor and track outages. Some of the features of this map include:

- Around-the-clock access to outage information
- Updated map every two minutes
- Map, Satellite, Bird's Eye or Hybrid format views
- Number of customers affected by outage



Visit www.RandolphEMC.com & see for yourself!

REMC's Tax Payments Help Fund Local Services

Randolph EMC isn't just an electric company, we're a local business looking out for you. Like all individuals and businesses, electric co-ops pay taxes annually.

Randolph EMC paid a total of \$609,308.03 in property taxes to Randolph, Moore, Montgomery, Chatham and Alamance counties for 2010. The co-op serves more than 31,000 consumers in these five counties.

As a not-for-profit business, Randolph EMC does not pay corporate income taxes. However, since it is member-owned, the cooperative returns any margins above operating expenses to its members in the form of capital credits. In 2010, Randolph EMC returned a total of \$1.5 million in capital credits to members who received service in 1985 and 1986.

Tax payments and capital credits are only two of the many ways that Randolph Electric provides support to our community. In Randolph County alone, Randolph EMC ranks eighth in the Top 10 Taxpayers of 2010. School systems, law enforcement, road construction and maintenance, and other services are underwritten locally by property tax dollars. Since our own customers, as well as the public at large, depend on these services, Randolph EMC plays a significant role in funding them.

This is just one more way REMC is looking out for you.



SWAPSHOP

For Sale

CKC purebred Chihuahuas \$300. 910-464-3134.

50 lb bag feed wheat \$8.50/bag. 336-622-2480.

John Deere 709 3-point hitch bush hog \$2,500. Military issue 14kw diesel generator \$2,500. 336-879-2925.

International Model 275 Tractor, 35 HP 4 cylinder diesel, 3-point hitch w/ all equipment, EC. \$6,500. 910-464-3171.

1955 Model 60 John Deere w/ Model EO80A John Deere scrape blade. Fully restored & parade ready. \$6,500. 336-879-3765.

Currently taking contact info for organic horse quality square bales of hay picked up from field May-Sept. Fescue & coastal Bermuda, fescue & orchard, fescue & rye, \$2.85/bale & up picked up from field. In-barn price is \$3.95 & up. Pat at 336-317-4105.

Allis Chalmers 333 no till 4-row corn planter w/ extra plates \$4,000. Ford TW10 tractor w/ new battery & free plow \$9,000. Taylorway 25 disc offset harrow \$5,000. 336-622-4031 or 336-908-4094.

12'-15' chest freezer \$50. 336-622-4031 or 336-908-4094.

2004 model 17ft Carolina Skiff boat w/ center console, 50HP Johnson motor. Fish finder, trolling motor \$6,595. 100' Spot fishing net, used once \$175. 336-879-8294 or 336-460-1075.

Walnut trees & colored day lilies. \$5 ea. 336-376-3960.

For Rent

2 BR 1 BA singlewide mobile home for weekly rental for \$400 in Holden Beach. 910-464-3134.

Mobile home lot in Carthage area. 910-464-3459.

New 2011 SWMH, 2 BR, 1 BA, private lot, unfurnished. Hwy. 220 S., Asheboro. Housing approved. \$475/month. 336-736-8105.

Members email Swap Shop items to General@RandolphEMC.com

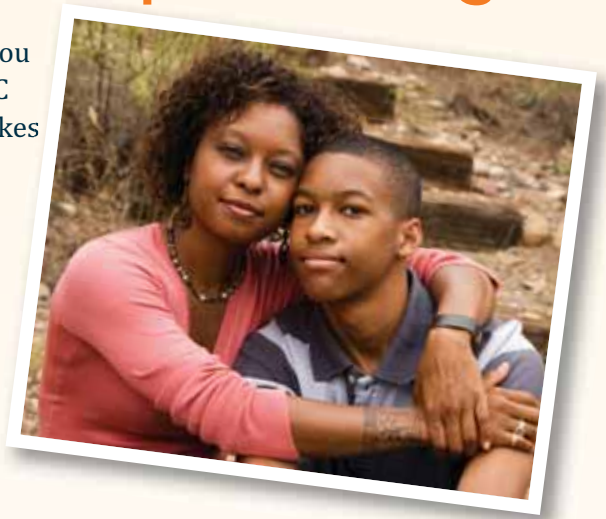
Make a Change with Your Spare Change

It's only small change—1¢ to 99¢ per month—but when you multiply that by the thousands of generous Randolph EMC members who participate in People Helping People, it makes a BIG difference in your local communities.

This program is funded by cooperative members who round up their electric bill to the nearest whole dollar each month. For example, if your bill is \$74.22 it would be rounded up to \$75.00 and that extra 78¢ goes directly into the People Helping People assistance fund.

This unique program provides assistance for Randolph EMC members and community organizations. Some examples of donations include assistance for victims of house fires and floods, cancer patients, elderly members with overwhelming prescription costs, local food pantries and more. Your contributions can and do make a difference right here at home.

If you are not already a member of this great program, sign up today. Complete the form below and return it to your local REMC office.



"I am so grateful for your help...These have been such difficult times for us—the worst I've known, personally, and God has provided us with little miracles along the way. Thank you for the work you do."

— C.S., REMC member & PHP donation recipient

Yes! I want to contribute to People Helping People. By filling out this form, I give REMC permission to round up my electric bill to the nearest dollar each month.



Name (as it appears on your bill)

Address

City

State

ZIP

Phone

Email

Signature

Account #

Send completed form in with your bill or mail to PO Box 40 · Asheboro, NC 27204



Electronics account for 8.1 percent of your home's energy use. Cut costs by plugging items into a power strip, and turning the strip off when not in use. "Smart" power strips are another good option—when one master device like a TV is turned off, it cuts power to other selected items (DVD players, gaming consoles, stereos, etc.).

Source: U.S. Department of Energy

watts working | may 2011 E

MAY IS ELECTRICAL

Electrical Fire Safety

About 28,600 home electrical fires occur during a typical year, leading to \$1.1 billion in property losses. Faulty electrical outlets and old wiring are the main causes of electrical fires, as are damaged cords, plugs, switches, and light fixtures.



The number one priority in a fire is to escape safely.

Only use a fire extinguisher if:

- 🔥 The fire department has been called.
- 🔥 Everyone has exited the building.
- 🔥 The fire is confined to a small area, such as a wastebasket, and is not growing.
- 🔥 The room is not filled with smoke.

Not all fire extinguishers are alike. Only a Class C extinguisher can be used on an electrical fire. Remember the word **PASS**:

Pull the pin. Hold the extinguisher with the nozzle pointing away from you and release the locking mechanism.

Aim low. Point the nozzle toward the base of the fire.

Squeeze the lever slowly and evenly.

Sweep the nozzle from side-to-side.

Remember: Know when to go.

Make sure you have a home fire escape plan and working smoke alarms.

Source: U.S. Fire Administration, National Fire Protection Association

Know How to Survive Auto Accidents Involving Power Lines

Instincts tell us to flee danger. Unfortunately, in vehicle accidents that bring down power lines, these natural inclinations can lead to tragic results.

Randolph Electric wants everyone to know: If your car hits a power pole, or otherwise brings a power line down, stay in your vehicle and wait until the local electric utility arrives on the scene and ensures that lines have been de-energized. If you come upon or witness an accident involving toppled power poles and lines, don't leave your vehicle to approach the scene.

In the vast majority of those incidents, the safest place to remain is inside the car. Only in the rare instance of fire should people exit a vehicle. Then, they must know how to do so safely—jumping free and clear, landing with feet together, and hopping away. It's difficult to get out without creating a path for current to flow, which is why one should get out only if forced to.

Electricity spreads out through the ground in ripples, like a stone dropped in water. The voltage is highest in the ring closest to the vehicle and decreases with distance. Hop with feet together so that one foot won't be in a higher voltage zone than another, which could make you a conductor for electricity!

Source: SafeElectricity.org



**Know what's below.
Call before you dig.**

To find out where utility lines run on your property, **simply dial 811** from anywhere in the country **a few days prior to digging**. Tell the operator where you're planning to dig and what type of work you will be doing, and affected local utilities will be notified.

In a few days, a locator will arrive to designate the approximate location of any underground lines, pipes, and cables with flags or marking paint so you'll know what's below. Then the safe digging can begin!

Projects that include digging, like planting a tree or bringing in a backhoe for trench work call for extra safety consideration. Underground utilities, such as buried gas, water, and electric lines, can be a shovel thrust away from turning a summer project into a disaster.

SAFETY MONTH

Electrical Safety Calendar

Use this handy calendar to help keep your home safe. For more tips, visit esfi.org.

JANUARY

- Check and replace furnace filters

FEBRUARY

- Vacuum refrigerator coils

MARCH

- Replace smoke and carbon monoxide alarm batteries if not done in last 12 months

APRIL

- Check and replace furnace filters

MAY

- Clean air conditioners or schedule annual inspection
- Vacuum refrigerator coils

JUNE

- Dust light fixtures/lamps
- Schedule annual inspection of gas-powered dryer

JULY

- Check and replace air conditioning filters

AUGUST

- Vacuum refrigerator coils

SEPTEMBER

- Schedule annual furnace cleaning and inspection

OCTOBER

- Check and replace furnace filters

NOVEMBER

- Vacuum refrigerator coils

DECEMBER

- Dust light fixtures/lamps

ESFI recommends hiring a licensed, qualified home electrical inspector if:

Your home is more than 40 years old; your home had a major addition or renovation or major new appliance added in the last 10 years; and/or you are the new owner of a previously owned home.

Every month you should:

1. Inspect all electrical and appliance cords for damage

2. Test GFCIs & AFCIs

Whether you have a receptacle-type or circuit breaker-type ground fault circuit interrupter (GFCI), pushing the TEST button should turn off power to the circuit. To restore power, press the RESET button. To test arc fault circuit interrupters (AFCIs) push the TEST button. The breaker handle should go to the middle or off position. To reset, move the breaker handle to the OFF position and then to the ON position.



3. Test smoke and carbon monoxide alarms

Push the TEST button or use other procedures recommended by the manufacturer. Smoke alarm batteries should be changed at least once a year. If an alarm "chirps" or "beeps" to indicate low batteries, change them right away. Replace all smoke alarms at least every 10 years.



Right-of-Way

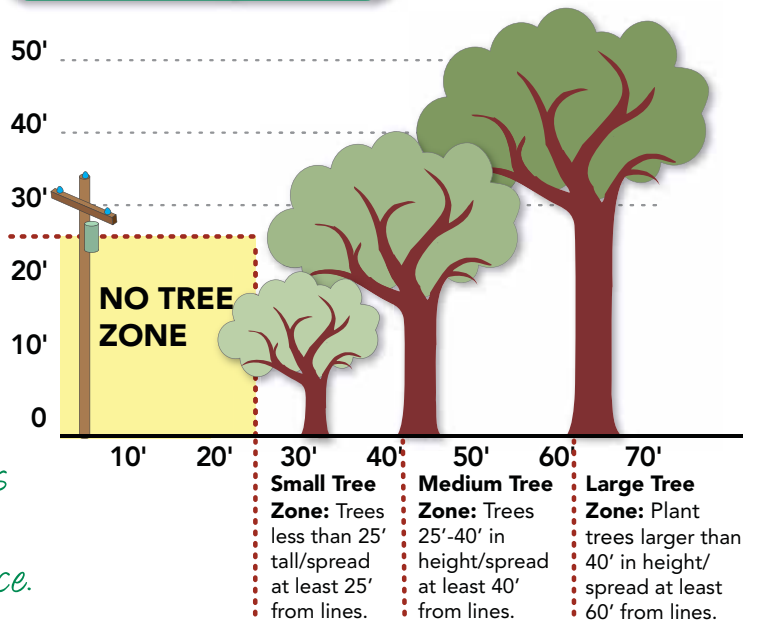
Crews will be working in the following areas in May:

- Smyrna Church Road
- Corral Road
- Grays Chapel area

Remember...

If you notice anything that might interfere with power lines or pose a serious threat, notify your local Randolph EMC office.

Tree Planting Guide



Trees can be a power line's worst enemy...

Strong winds, storms, and heavy ice can topple trees or shatter branches that pull down power lines and cause outages. Sometimes, even heavily damaged lines can remain energized with the potential to electrify trees and nearby objects.

a word about Randolph Electric

by Dale Lambert



Small Changes Add Up to Big Savings

Dear Members,

Sometimes, it's the little things in life that mean the most over time. That analogy also applies to electricity use. Taking the time to do the little things correctly can add up to big savings on your electric bill and extra money in your pocket. Some actions are so simple that we don't even think about them most of the time. Things like turning off lights when you leave a room, unplugging appliances when you're not using them, and raising the temperature on your thermostat a bit as our weather warms up. When you do these things together, it can help your family rack up big energy savings.

At Randolph EMC, we're always looking for ways to help you, our members. With energy costs rising due to a growing demand for electricity, higher power plant costs and state mandates, energy efficiency remains a key part of our efforts to keep rates affordable. Best of all, energy efficiency—simply making the electricity you use do more—saves you money.

Because we're part of the Touchstone Energy® Cooperatives network, you have access to a valuable resource that not only identifies simple energy-saving tasks, but also illustrates the real-dollar savings they can produce if you implement them in your home. **TogetherWeSave.com** uses real savings calculations—based on REMC's residential rate and climate zone—to motivate and inspire small changes in behavior.

I encourage you to visit www.TogetherWeSave.com if you haven't already. You'll be asked for your ZIP code to help provide accurate electricity rates for your home.

The Virtual Home Tour provides a good starting point. As you move through each of the six rooms, clicking on areas highlighted in yellow prompts you to take various interactive energy-saving measures and shows how these changes translate into savings on your electric bill.

A visit to the attic, for example, recommends adding insulation. It can be exciting to see the end result after sliding the arrow up the scale to add extra inches of insulation. Adding nine inches saves up to \$154 a year. Add 15 inches, and that number jumps to \$258.

Now head downstairs to the living room. Most folks enjoy watching television and playing Wii or Xbox games, but you don't need these gadgets on 24 hours a day. By unplugging entertainment center devices when they're not in use, you could save up to \$162 every year. Seems simple enough—and every small step adds up to big savings. In fact, just raising your thermostat from 75 degrees to 78 degrees in the summer could save \$76.

In viewing Randolph EMC's site statistics, it looks as though several members have already visited the site. Based on our calculations, they have saved nearly \$200,000 collectively in their virtual houses! That translates to actual dollars if each of them makes those suggested changes in reality.

If you want more in-depth information on energy efficiency, **TogetherWeSave.com** also includes a library of short videos on various topics.

Finding ways to help you save energy dollars during tough times is important to us. Valuable tools like **TogetherWeSave.com** are just one more way we at Randolph EMC are looking out for you. If you want to learn about other ways to make your home more energy efficient or schedule a free home energy audit, visit www.RandolphEMC.com or call us at 1.800.672.8212.

Cooperatively Yours,

Dale F. Lambert
Chief Executive Officer



Touchstone Energy®
Cooperatives

TOGETHERWESAVE.COM