



watts working

The Monthly Newsletter for Members of Randolph Electric Membership Corporation

Teachers Rewarded for Bright Ideas



**BRIGHT
IDEAS**

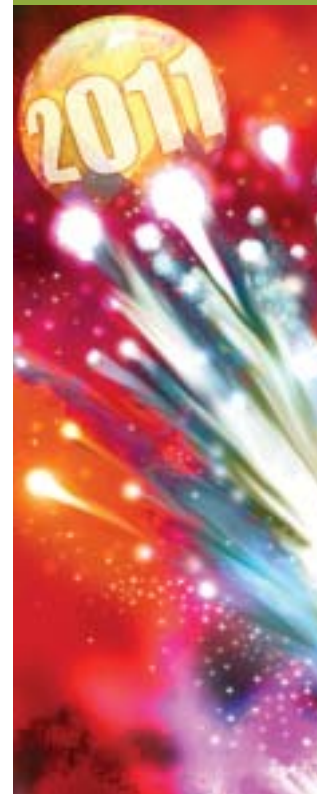
Randolph Electric Membership Corporation awarded \$10,000 in grants to eight teachers across Randolph and Montgomery counties as part of the Bright Ideas grant program. Sponsored by North Carolina's electric cooperatives, Bright Ideas honors K-12 educators who put great thought and effort into designing innovative, creative projects that enhance their students' learning experience.

"Randolph EMC is committed to bettering the communities we serve and there is no better way to do that than through educating our youth," said Dale Lambert, Executive Vice President and General Manager at Randolph EMC.

Randolph EMC has given more than \$175,000 to 158 teachers across its service area over the past 16 years. "We are so proud to support the schools in our service territory. The teachers in our communities are very special, and they demonstrate that with their willingness to go above and beyond to give their students a better classroom experience. We hope to see many more great ideas come to us next year," Lambert said. Congratulations to all the winners!

A panel of retired teachers representing Asheboro City, Randolph, Moore and Montgomery County Schools carefully reviewed and discussed each application before deciding on the final awards, showcased on the next page.

Randolph EMC offices will be closed
December 31
for New Year's.
*Happy
New Year!*



in this issue

Bright Ideas Grant Winners	B
Conservation Corner	E
Dale Lambert's AWARE Column	H

2010 Bright Ideas Winners



Sally Beck, Northeastern Randolph Middle School, \$1,009.40

"Navigating Toward a Bright Future" uses handheld G.P.S. units in conjunction with Google Earth to enhance geography, math and science skills. By applying satellite technology, students will locate caches containing cultural clues and use them to compare and contrast different groups across the globe.

Adults pictured (L-R): Amanda Pratt, teacher; Sally Beck, grant winner; Megan Foster, teacher.



Pat Buck, McCrary Elementary School, \$1,460.00

"Outdoor Classroom" gives all K-5 classes access to an outdoor covered shelter ideal for science activities using the nearby school garden, and may also be used for buddyreading, applied math, and other activities.

Adults pictured (L-R): Jill Vanness, Public Relations Coordinator at Randolph EMC; Pat Buck, grant winner; Julie Brady, Charles McCrary Elementary School Principal; Heather Joyce, Assitant Teacher.



Angela Frye, Southwestern Randolph Middle School, \$1,128.50

"Energize Technology" will help students understand renewable energy from wind, water, and solar resources. This project will develop a class set of materials to implement hands-on energy experiments and activities to result in the construction of a Solar House.

Grant winner Angela Frye (left) and Southwestern Randolph Middle School Principal Edwina Ashworth (right).



Lisa Garrison, Archdale Elementary School, \$1,711.80

"Weather Watchers and Data Collectors" uses Kestrel 4500 Pocket Weather Trackers to measure and chart weather data. Students will track changes in weather in order to develop a larger picture of the climate in the area.

Adults pictured (L-R): Jill Vanness, Public Relations Coordinator at Randolph EMC; Lynn Smith, Archdale Elementary School Principal; Lisa Garrison, grant winner.

2010 Bright Ideas Winners

Laura Johnston, Farmer Elementary School, \$522.74

"Flipping with Excitement Over Flip Video Cameras" will enhance instruction and actively engage students in their learning. Students will create videos in various subjects throughout the school year, which will be shared on the class Web site with parents and other family and community members.

Pictured: Grant winner Laura Johnston and her third grade class.



Debra Knowles, West Middle School, \$1,963.45

"A Glimmer of Hope" involves advocating for girls' education in developing countries, including fundraising to support a girl's education and eventually working on a cultural exchange project with the students that they help sponsor.

Adults pictured (L-R): Dr. Dale Ellis, Montgomery County Schools Superintendent; Debra Knowles, grant winner; Derek McCoy, West Middle School Principal.



Nita Thompson, Green Ridge Elementary School, \$1,564.00

"Listen to Learn" creates a listening center that will increase fluency and reading comprehension for "at promise" students through the use of assistive reading technology.

Adults pictured (L-R): Dr. Dale Ellis, Montgomery County Schools Superintendent; Nita Thompson, grant winner; Martha Garner, assistant teacher.



Angie Tofflemeyer, West Middle School, \$640.11

"It's a Small World" explores African culture and current African challenges through contemporary literature and periodicals. Using a series of novels and short stories that are African-themed or by African authors, as well as African periodicals, students will experience contemporary Africa in a new way.

Pictured (L-R): Christina Vaughan, West Middle School Assistant Principal; Derek McCoy, West Middle School Principal; Angie Tofflemeyer, grant winner; and Dr. Dale Ellis, Montgomery County Schools Superintendent.



SWAPSHOP

For Sale

2000 Ford Mustang, automatic w/ 4.0 motor & FlowMasters, high mileage, GC. \$3,000 OBO. 910-639-2514 or 910-639-2046.

1999 Sprint Limited Edition Bass Boat, red w/ power steering & 150 Johnson motor. GC \$5,500 OBO. 919-742-2484.

Bumper pull dump trailer. Electric or hydraulic dump, surge brakes, 80 cubic ft. \$2500. New 306cc 3500w Diesel generator, electric start, 4000 w surge, 120/240 v. \$2150. New 418cc 5500w Diesel generator, electric start, 6000 w surge, 120/240 v. \$2650. 336-461-3276.

Two garage doors w/ track, 7 x9. \$100 ea. 336-857-2303.

Split stacked hardwood firewood. Full size truck load \$55. 910-464-6028.

Nintendo Wii, GC less than 30 hours use. Two controllers, two nunchucks, 7 games & accessories all for \$300. 919-935-4116.

15-speed men's NEXT mountain bike, 26", red, \$50 or best offer; Electric hospital bed, no mattress, clean- \$100 OBO; 7-1/4" Makita circular saw- \$50 OBO; Broyhill Dining Table, no chairs, w/leaf- \$50 OBO; Maxam Leather men's XL Jacket, USA embroidered Eagle on back- \$40 OBO; Women's Maxam Leather 3/4 length Jacket- \$35 OBO; 13" color CRT TV w/VHS player- \$50 OBO. David or Susan @ 336-376-0264.

Timeshare, Maritime Beach Club, North Myrtle Beach, week 42 in October 2011,

2 BR 2 BA,, oceanfront, \$3,000. 336-328-7154.

Allis Chalmers 333 no till 4 row corn planter w/ extra plates & couler \$4,000. Ford TW 10 tractor w/ new battery & free plow \$9,000. Taylorway 25 disc offset harrow \$5,000. 336-622-4031 or 336-908-4094.

1961 red belly Ford 640 tractor \$3,500. 336-240-7923.

5,000 Red Sex Link pullets (young chickens). Brown egg layers, \$5.85 a pullet & up, vaccinated & debeaked. 336-708-2998.

1955 Model 60 John Deere w/ Model EO80A John Deere Scrape Blade. Fully restored & parade ready. \$6,500. 336-879-3765.

2004 model 17ft Carolina Skiff boat w/center console, 50HP Johnson motor. Fish finder, trolling motor \$6,595. 336-879-8294 or 336-460-1075.

New condition Samuel Lawrence dining room set. Includes china cabinet/base, table, six upholstered chairs Dark wood finish. \$2000 See pictures at <http://s1196.photobucket.com/albums/aa419/jacol64/Samuel%20Lawrence%20Dining%20Room%20Set/> Call 336-633-3193.

For Rent

Mobile home lot 2 miles from Asheboro on Hwy 64 W. 336-629-9234.

Mobile home, 3 bedroom, 2 bath. Also mobile home lot for rent in Putnam area. 910-464-3459.

Members email Swap Shop items to General@RandolphEMC.com

Get More from Your Membership

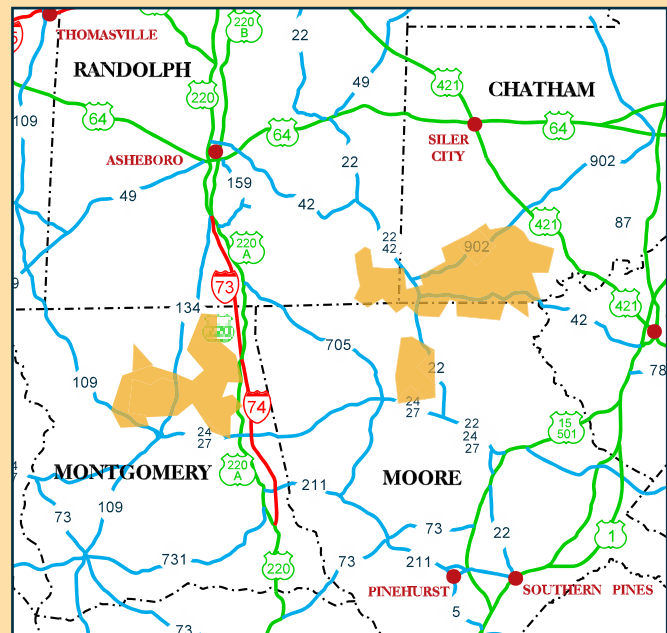
SECURITY LIGHTS

The sun goes down earlier these days but you can still play winter sports or work outdoors with a security light from Randolph EMC! For only pennies a day, it is an affordable way to light your home and property all year round.

The low monthly rate covers the light, wiring and even the electricity (it doesn't run through your meter), and all maintenance and bulb changes are handled by the cooperative at no cost to you.

Visit our Web site at www.RandolphEMC.com to learn more about the options available for security lights.

JANUARY SMART METER INSTALLATION



Randolph EMC crews will be installing smart meters in the highlighted areas of Randolph, Montgomery, Moore and Chatham Counties in January.

CONTACT US

Electric Service:

Asheboro(336) 625-5177
(800) 672-8212
 Robbins Area:(910) 948-3401
(800) 868-7014

Power Failures:(877) REMC-OFF
(1-877-736-2633)

Bill Payments:(877) 534-2319

Office Hours:

8:00 am – 5:00 pm | Monday–Friday

Board of Directors:

Steve HarrisPresident
 Bob WrightV. President
 Larry RouthSec.-Treasurer
 Jerry BowmanAssist. Sec.-Treasurer
 James Andrews, Delbert Cranford, Paul Hurley,
 Tammie Phillips, Sue Spencer

Dale F. Lambert...Executive Vice President/General Manager

Jay Albright District Vice President
 Ron Gunnell Vice President of Engineering
 Sonya Husband Vice President of Office Services
 Jimmy LanierVice President of Operations
 Bob Phillips Vice President of Administrative Services
 Jill Vanness Public Relations Coordinator, Editor

An Equal Opportunity Employer | M/F/V/H



4 Ways to Use Less Energy to Keep Things Clean

Your ENERGY STAR-qualified clothes washer or dishwasher operates very efficiently. That's likely one of the reasons why you bought it.

But there are simple ways to further reduce how much electricity each of these appliances consumes:

- 1** Select a lower water temperature—a cold wash/cold rinse setting, for example—on your washing machine to save energy dollars.
- 2** Choose a lower water level for smaller loads to trim water use. Some ENERGY STAR clothes washers even boast extra energy-cutting features such as pre-soak and “suds saver.”
- 3** Set the temperature on your home's water heater at a lower, 120 degrees to save as much as 80 percent on water heating costs associated with your dishwasher.
- 4** Use the efficiency settings, such as “energy-saving” and “short-wash” cycles on your dishwasher to shave both energy and water consumption. Most models also come equipped with an air-drying option that helps lower electric bills.



MY APPLIANCES AREN'T THE ONLY ENERGY STARS IN MY HOUSE.

I'm saving just by using more efficient settings on my ENERGY STAR® qualified appliances.

What can you do? Find out how the little changes add up at TogetherWeSave.com.

TOGETHERWESAVE.COM

The Wholesale Power Cost Adjustment

Q What is the WPCA line item on my bill?

A The Wholesale Power Cost Adjustment (WPCA) is the rate component on your electric bill that reflects the variable cost of electricity that Randolph EMC purchases from its wholesale power supplier. When fuel costs rise, Randolph EMC pays a higher price for electricity, which is recovered from members through the WPCA.

Our annual budget and rates are based on our best projections of what we expect to pay for electricity in the wholesale market and what our projected kilowatt-hour (kWh) sales will be for the year. Randolph EMC evaluates the WPCA at the beginning of each year to “normalize” these costs as much as possible. It's important to note, however, that the WPCA is subject to change during the year. If necessary, the WPCA is



adjusted up or down when “projected” power costs and “actual” power costs differ. The WPCA for 2011 is \$7.50 per 1,000 kWh, based on our projections of future costs.

You can think about the impact the WPCA has on your electric bill in the same way you look at how the price of gasoline affects the cost of operating your car. Even though your monthly car payment (your electricity delivery rate) hasn't gone up, the car you drive is costing more to operate now because gasoline prices have increased (as have prices for fuels used to generate electricity).

Keep Track of the Energy You Use

Monitor your monthly usage & cost of electric service. Be sure to read your meter on the same day each month.

Month	Date Read	Reading	kWh Used	Amount Bill	Date Paid
January					
February					
March					
April					
May					
June					
July					
August					
September					
October					
November					
December					
Totals					

2011 Holiday Schedule

New Year's Day

Friday, Dec. 31, 2010

Good Friday

Friday, April 22

Memorial Day

Monday, May 30

July 4th

Monday, July 4

Labor Day

Monday, September 5

Veteran's Day

Friday, November 11

Thanksgiving

Thursday, November 24

Friday, November 25

Christmas

Monday, December 26

Tuesday, December 27

New Year's Day 2012

Monday, January 2, 2012

EMPLOYMENT POLICY

All applicants for employment shall be considered and hired on the basis of merit, without regard to race, color, religion, sex, national origin, age or disability. The employment practices shall insure equal treatment of all employees without discrimination in rates of pay or other opportunities for advancement because of the employee's race, color, religion, sex, national origin, age or disability.

STATEMENT OF NONDISCRIMINATION

Randolph Electric Membership Corporation is the recipient of Federal financial assistance from the Rural Utilities Service, an agency of the U.S. Department of Agriculture, and is subject to the provisions of Title VI of the Civil Rights Act of 1964, as amended; Section 504 of the Rehabilitation Act of 1973, as amended; the Age Discrimination Act of 1975, as amended; and the rules and regulations of the U.S. Department of Agriculture. In accordance with Federal law and the U.S. Department of Agriculture's policy, this organization is prohibited from discriminating on the basis of race, color, national origin, age or disability. The person responsible for coordinating this compliance is Olivia Simpson. To file a complaint of discrimination, write to:

USDA
 Director, Office of Civil Rights
 Room 362-W, Whitten Building
 1400 Independence Avenue, SW
 Washington, D.C. 20250-9410

or call 202.720.5964 (voice or TTD). Both USDA and Randolph Electric Membership Corporation are equal opportunity providers and employers.

2011 Billing Schedule

READING COMPLETE BY	1	Dec 29*	Jan 28	Feb 25	Mar 25	Apr 26	May 27
	2	Jan 7	Feb 4	Mar 4	Apr 1	May 6	Jun 3
	3	Jan 14	Feb 11	Mar 11	Apr 8	May 13	Jun 10
	4	Jan 21	Feb 18	Mar 18	Apr 15	May 20	Jun 17
BILL IN THE MAIL	1	Jan 7	Feb 4	Mar 4	Apr 1	May 6	Jun 3
	2	Jan 14	Feb 11	Mar 11	Apr 8	May 13	Jun 10
	3	Jan 21	Feb 18	Mar 18	Apr 15	May 20	Jun 17
	4	Jan 28	Feb 25	Mar 25	Apr 21	May 27	Jun 24
PAST DUE DATE	1	Jan 28	Feb 28	Mar 28	Apr 28	May 28	Jun 28
	2	Feb 5	Mar 5	Apr 5	May 5	Jun 5	Jul 5
	3	Feb 12	Mar 12	Apr 12	May 12	Jun 12	Jul 12
	4	Feb 19	Mar 19	Apr 19	May 19	Jun 19	Jul 19
SUBJECT TO CUTOFF	1	Feb 7	Mar 7	Apr 11	May 9	Jun 6	Jul 11
	2	Feb 14	Mar 14	Apr 18	May 16	Jun 13	Jul 18
	3	Feb 21	Mar 21	Apr 25	May 23	Jun 20	Jul 25
	4	Feb 28	Mar 28	May 2	May 31	Jun 27	Aug 1
READING COMPLETE BY	1	Jun 24	Jul 26	Aug 26	Sept 27	Oct 28	Nov 23
	2	Jul 1	Aug 5	Sept 2	Oct 7	Nov 4	Dec 2
	3	Jul 8	Aug 12	Sept 9	Oct 14	Nov 10	Dec 9
	4	Jul 15	Aug 19	Sept 16	Oct 21	Nov 18	Dec 16
BILL IN THE MAIL	1	Jul 1	Aug 5	Sept 2	Oct 7	Nov 4	Dec 2
	2	Jul 8	Aug 12	Sept 9	Oct 14	Nov 10	Dec 9
	3	Jul 15	Aug 19	Sept 16	Oct 21	Nov 18	Dec 16
	4	Jul 22	Aug 26	Sept 23	Oct 28	Nov 23	Dec 23
PAST DUE DATE	1	Jul 28	Aug 28	Sept 28	Oct 28	Nov 28	Dec 28
	2	Aug 5	Sept 5	Oct 5	Nov 5	Dec 5	Jan 5**
	3	Aug 12	Sept 12	Oct 12	Nov 12	Dec 12	Jan 12**
	4	Aug 19	Sept 19	Oct 19	Nov 19	Dec 19	Jan 19**
SUBJECT TO CUTOFF	1	Aug 8	Sept 6	Oct 10	Nov 7	Dec 5	Jan 9**
	2	Aug 15	Sept 12	Oct 17	Nov 14	Dec 12	Jan 16**
	3	Aug 22	Sept 19	Oct 24	Nov 21	Dec 19	Jan 23**
	4	Aug 29	Sept 26	Oct 31	Nov 28	Dec 28	Jan 30**

AUTOMATIC DRAFT DATES

CYCLE 1 18th of month	CYCLE 2 25th of month	CYCLE 3 2nd of month	CYCLE 4 9th of month
--------------------------	--------------------------	-------------------------	-------------------------

Did You Know?

Update Your Phone Number for Faster Service

- Your phone number is linked to your service address. Our outage management system automatically recognizes your location from your phone number and we're able to dispatch crews more quickly, reducing your outage time.
- Randolph EMC uses a telephone-based Member Notification System to send important messages about your bill status, storms or outage restoration progress.
- Phone number does not need to be a land-line at the service location. Our system will recognize cell phones as well.
- You may list multiple phone numbers; simply designate which number you would like to be your primary number for the Member Notification System to call.

Call **1.800.672.8212** to update your contact information.

a word about Randolph Electric

by Dale Lambert



Rising Costs Lead to WPCA Increase

Dear Members,

Last month, I reflected on 2010 and some of the important milestones that transpired throughout the year. As we look forward to 2011, we are optimistic that the year will bring us many positive opportunities.

The economy ranks very high on everyone's list. This has certainly been a challenging time for our members and Randolph EMC. Your cooperative has taken numerous steps to reduce costs and increase efficiency, and we plan to continue that effort in 2011.

We, like many other businesses, have reduced our workforce. Randolph EMC currently has the same number of employees working at the cooperative that we did in 1999. Since 1999, however, the number of meters we serve has risen over 11 percent, and the miles of line we must maintain have increased almost 13 percent.

Randolph EMC operates on a not-for-profit basis. Our goal is to deliver exceptional electrical service to you at the lowest cost possible. Because we serve mostly rural areas, it can be challenging to operate at the same levels as other utilities.

MEASURING COST DISTRIBUTION

Utilities are compared with one another in terms of density, or meters per mile of line. The average number of meters per mile of line for North Carolina cooperatives is 10. Randolph EMC has less than eight meters per mile of line. Investor-owned utilities serve around 30 meters per mile of line and the municipalities serve more than 40 meters per mile of line. Because we have fewer meters per mile of line to share our operating expenses, we have to work harder to manage costs and operate efficiently. I feel it is important that you know you are receiving the same quality electricity as the utilities that serve more meters per mile while receiving what I consider far better customer service as well.

Over the years, I have communicated numerous topics to you. If I had my choice, I would always prefer to share the good news with you. But I strongly believe that I also have the obligation to share news that may not be so pleasant.

RISING WHOLESALE POWER COSTS

With that in mind, I would like to give you an update on the Wholesale Power Cost Adjustment (WPCA) for 2011. The WPCA reflects the increase or decrease in the cost of generation of electricity from our base rates. The cost to generate electricity for our members represents almost 60 percent of our total cost of operations.

In January, 2010, the WPCA was reduced from \$6.00 per 1,000 kilowatt hours to \$4.50 per 1,000 kilo-watt hours. This resulted in a 1.2 percent rate reduction for the average residential member.

For 2011, our wholesale power cost is increasing. Randolph EMC's cost to generate electricity will increase in 2011 by 6.94 percent over the wholesale rates we paid in 2010. Your Board of Directors and management team have tried to minimize the impact to the members as much as possible. With this in mind, the impact to the average residential member will be an increase from \$4.50 per 1,000 kWh to \$7.50 per 1,000 kWh. This results in an increase of 2.4 percent over 2010 and 1.2 percent over 2009.

We will surely see new challenges and opportunities in 2011. We look forward to the New Year and the privilege to serve you at the highest level possible. From your Board of Directors, employees and management team, we want to wish you a happy, safe and prosperous New Year.

Cooperatively Yours,

Dale F. Lambert
Executive Vice President and General Manager