

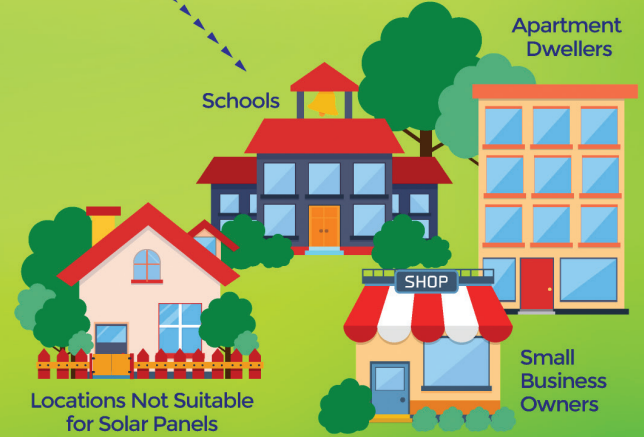
SOLAR FARM

Solar panels installed & maintained at Randolph EMC's Asheboro office



RENEWABLE ENERGY

Panels generate renewable energy that contributes to REMC's energy mix



ENERGY CREDITS

Member participants receive a credit on their electric bill representing their contribution to the output of the solar farm

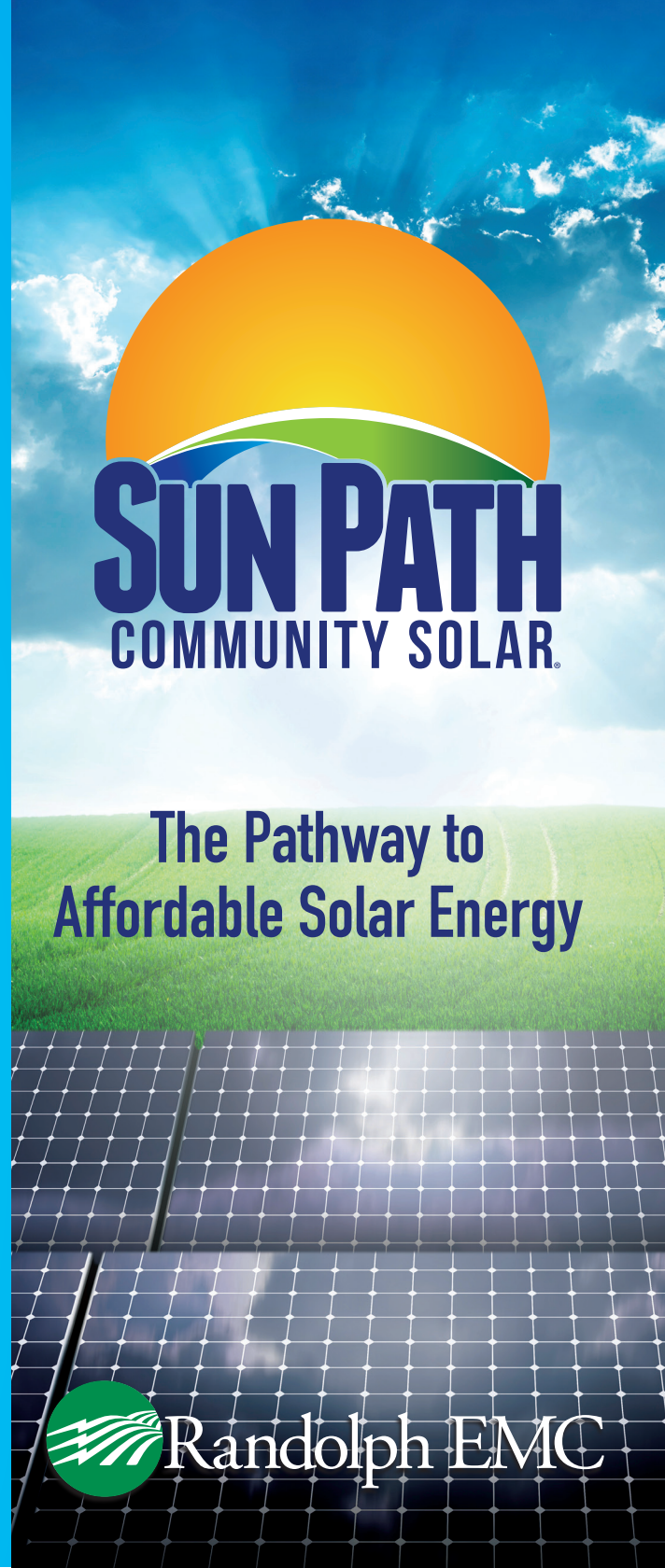
Some Advantages of Community Solar

- More affordable than on-site installation
- No changes to your property
- Maintenance free
- No red tape with zoning restrictions or homeowners' associations
- Get the most out of the sun's potential with prime placement at our site
- Perfect for renters who want to be involved with renewable energy



The Pathway to Affordable Solar Energy for Members of Randolph EMC

1-800-672-8212
RandolphEMC.com



The Pathway to Affordable Solar Energy





SunPath Community Solar is the pathway to affordable solar energy for any member of Randolph EMC!

As your trusted energy provider, REMC is proud to offer members interested in taking advantage of the benefits of renewable energy a new option beyond the traditional, on-site home installation. This 100 kilowatt solar array is located adjacent to REMC's Asheboro office, so participants can utilize locally produced, clean energy to help offset their carbon footprint – all without making any changes to their property.

Two Ways to Participate

Instead of installing and retaining ownership of their own solar energy system, members subscribe to the energy produced by the SunPath Community Solar panels. Participants are then credited monthly for the energy produced by the number of panels in their subscription based on the cooperative's published Solar Energy Credit at the time of billing.

Subscriptions are available exclusively to Randolph EMC members on a first-come, first-served basis and members may subscribe to any number of available panels they wish.

Monthly Subscription

\$2.85 per panel

Members pay a monthly per-panel subscription fee and receive a credit for the amount of the energy produced on the same bill. A one-year commitment is required, which renews annually.

Full-Term Subscription

\$491 per panel

Members pay a one-time fee per panel for the rights to that panel's energy output. Zero interest financing is available for up to 12 months. A credit for the energy produced will post to each bill for the next 20 years.

How Does Community Solar Compare with an On-Site Residential Installation?

Community solar eliminates the expense of purchasing, installing and maintaining your own solar energy system while giving you the same benefit on your electric bill. The typical size of a residential system is at least 3 kW.

Here's a conservative comparison of the estimated costs associated with both home and community solar installations for a 3 kW system:

3 kW SOLAR ENERGY SYSTEM COMPARISON

INSTALLATION COST COMPARISON

	HOME	COMMUNITY SOLAR
Panels Required for 3 kW System	11	11
Price Per Panel	\$950	\$491
Total Cost of Panel Installation	\$10,450*	\$5,401

ANNUAL SOLAR PRODUCTION COMPARISON

	HOME	COMMUNITY SOLAR
Kilowatts Per Panel	0.288 kW	0.288 kW
Average Production / 3 kW	4 hours / day	4 hours / day
Average Daily Production / 3 kW	12.672 kWh	12.672 kWh
Average Annual Production / 3 kW	4,625 kWh	4,625 kWh

ANNUAL SOLAR PRODUCTION CREDIT COMPARISON

	HOME	COMMUNITY SOLAR
Example Solar Energy Credit Rate	4¢ / kWh	4¢ / kWh
Average Annual Production / 3 kW	4,625 kWh	4,625 kWh
Total Annual Billing Credit / 3 kW	\$185	\$185

Based on the Wattage of each panel, a 3 kW solar energy system would equal 3.168 kW. Member may qualify for 30% Federal Tax Credit, which would yield a home installation cost of \$7,315. Estimated home installation costs based on data provided by National Renewable Energy Laboratory.

